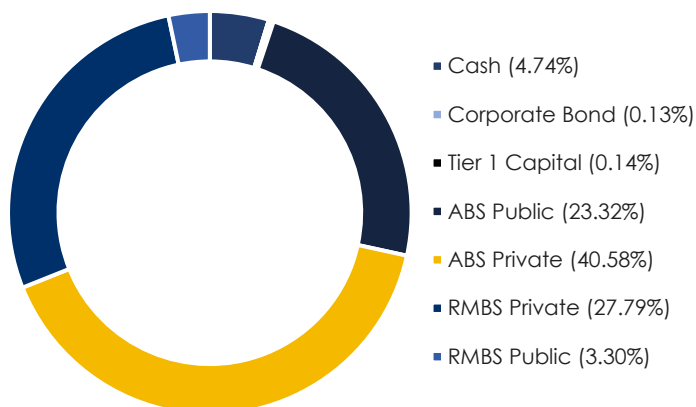


**DOMINION INVESTMENT TRUST**

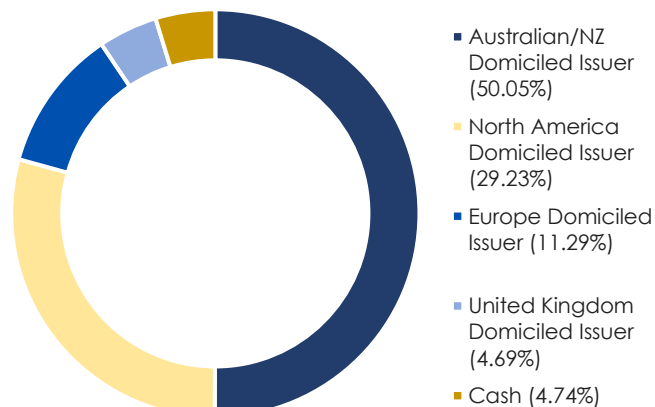
**PORTFOLIO STATISTICS**

Weighted Average Traded Margin	616
Equity Buffer	3.46%
Running Yield	10.00%
Yield to Maturity	10.57%
Interest Rate Duration	0.03
Credit Duration	1.78
Average Credit Rating	BBB-
Exposure to Realm funds	51.66%
Positions Entered / Positions Exited over the month of March	3 / 3

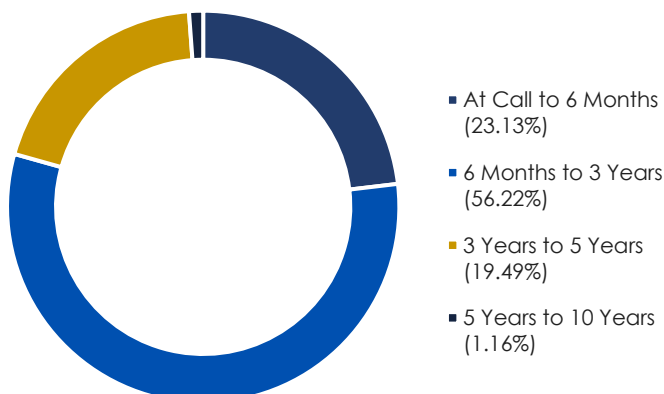
**PORTFOLIO CHARACTERISTICS**



**GEOGRAPHIC EXPOSURE**

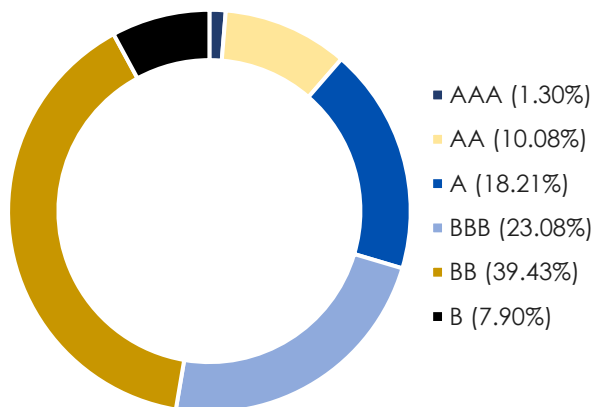


**MATURITY PROFILE**

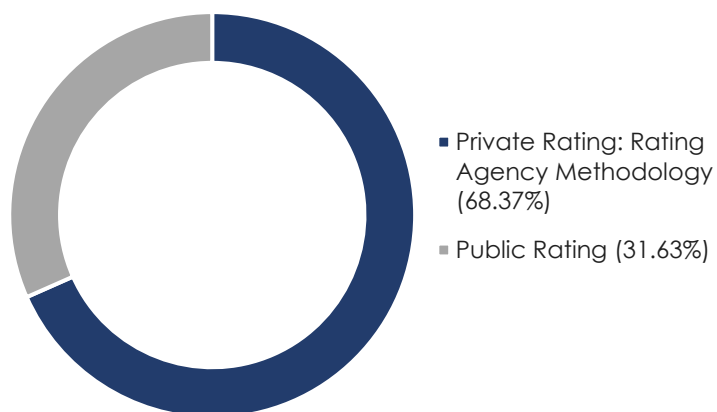


**DOMINION INVESTMENT TRUST**

**CREDIT QUALITY**



**RATING METHODOLOGY\***



**PORTFOLIO STATISTICS – STRUCTURED CREDIT ALLOCATION**

Number of Issuers	108
Number of Facilities	305
Number of Positions	736
Average Position Exposure	0.13%
Number of Underlying Loans	785,832
Weighted Average Portfolio LVR	65.92%
Credit Enhancement and NIM of Underlying Assets	9.49%
PIK Loan Exposure (look through basis)	0.28%
Direct Exposure to Construction Loans	0.00%
Indirect Exposure to Construction Loans	0.80%
Total Arrears (30+ days)	1.41%
Seasoning (yrs)	0.91
Term Remaining (yrs)	2.28

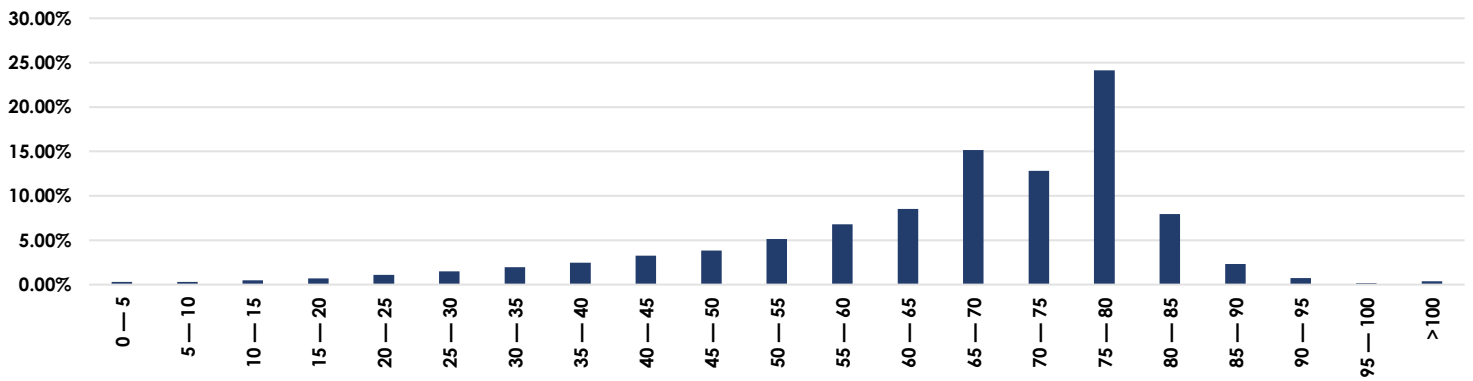
\* Where a facility does not have an official Public Rating, Realm adopts a recognised ratings methodology for Public RMBS/ABS and assumes the facility is fully drawn (at maximum limits).

**DOMINION INVESTMENT TRUST**

**STRUCTURED CREDIT EXPOSURE BY LOAN TYPE**

Mortgages	31.09%
Auto/Equipment Loans	19.92%
Personal Loans	6.50%
Corporate Loans	38.41%
<b>Total Structured Credit Exposure</b>	<b>95.92%</b>

**WEIGHTED AVERAGE PORTFOLIO LVR - RMBS**



**TOP WAREHOUSES AS A PERCENTAGE % OF THE PORTFOLIO**

Top Warehouse(s)	Weight of Portfolio	Total Loans within the Warehouse(s)
Top 1 Warehouse	6.27%	14,209
Top 3 Warehouses	14.44%	14,465
Top 5 Warehouses	20.76%	14,579
Top 10 Warehouses	31.20%	21,351

**ESG EXPOSURE**

ESG Sector	Portfolio Exposure
Fossil Fuels	0.00%
Non-Renewable & Nuclear Energy	0.00%
Alcohol	0.00%
Gambling	0.00%
Carbon Intensity	13.74

## DOMINION INVESTMENT TRUST

Net Tangible Assets	\$100.33
Target Return (Net)	1-month BBSW + 3.50% p.a.
Distribution Freq.	Monthly
Expected Call	27 February 2030
Maturity Date	27 February 2031
Units on Issue	3,450,000
Distribution frequency	Monthly
Unit Pricing frequency	Daily
ARSN	683 392 743
Manager	Dominion Investment Management Pty Ltd
Trustee	Equity Trustees Limited (ACN 004 031 298)

### ABOUT REALM

Realm are a dynamic, market leading Australian based Credit and Fixed Income Manager, investing across both Public Debt and Private Debt assets backed by a 12-year track record.

Realm manages in excess of \$12bn across multiple debt strategies; including the flagship Realm High Income Fund, the Realm Global High Income Fund AUD, the Realm Short Term Income Fund, and the Realm Strategic Income Fund, which have all met or exceeded their respective return targets since inception.

Led by a Senior Leadership team comprised of Head of Bank Capital & Corporate Credit *Andrew Papageorgiou*, Head of Structured Credit *Robert Camilleri*, Head of Strategy & Risk *Ken Liow*, and Head of Distribution *Broc McCauley*, Realm are a team of 28 members across Melbourne and Sydney offices, with 16 experienced investment professionals. Andrew, Robert, and Ken, who head up the investment teams have an average of 27 years of investment market experience each and are well supported by a deep and experience investment team.

The growth of Realm has been underpinned by its ability to meet the stated objectives of their investment strategies for over a decade. This has been driven by a fundamentally oriented, largely contrarian, investment approach, which is supported by a comprehensive range of quantitative tools.

## DOMINION INVESTMENT TRUST

### GENERAL DISCLAIMER

Dominion Investment Management Pty Ltd ACN 681 916 030 (**Manager**), a corporate authorised representative number 001312185 of Realm Pty Ltd ACN 155 984 955 AFSL 421336 (**Realm**) is the investment manager of the Dominion Investment Trust ABN 55 743 359 946 (**Scheme**). Equity Trustees Limited ("Equity Trustees") (ABN 46 004 031 298), AFSL 240975, is the Trustee for the Dominion Investment Trust ("the Fund"). Equity Trustees is a subsidiary of EQT Holdings Limited (ABN 22 607 797 615), a publicly listed company on the Australian Securities Exchange (ASX: EQT). The information contained in this fact sheet (**Document**) has been prepared by the Manager and relates to the offer by EQT as Trustee of the Scheme (**Issuer**) to issue units in the Scheme (**Units**). While neither the Manager nor EQT has any reason to believe that the information is inaccurate, the truth or accuracy of the information contained in this Document is expressly not warranted or guaranteed. Anyone receiving this Document must obtain and rely upon their own independent advice and inquiries. The offer of the Units is made by, or is accompanied by, an Information Memorandum (**IM**) issued by EQT.

This Document is only available to wholesale clients (within the meaning of section 761G of the Corporations Act 2001 (Cth)) (**Wholesale Client**) and must not be passed on (whether directly or indirectly) to any retail client (within the meaning of section 761G of the Corporations Act 2001 (Cth)). By receiving this Document, you expressly acknowledge and represent that you are a Wholesale Client.

This Document is not a product disclosure statement, prospectus or other offer Document under Australian law or any other law. This Document has not been filed, registered or approved by regulatory authorities in any jurisdiction. The information contained in this Document is qualified in its entirety by reference to the IM, which contains additional information about the investment objective, terms and conditions of an investment in the Units. No person has been authorised to make any statement concerning the Units other than as set forth in the IM and any such statements, if made, may not be relied upon.

In preparing this Document, the Manager did not take into account the investment objectives, financial situation and particular needs of any person. The information contained in this Document must not be copied or disclosed in whole or in part without the prior written consent of the Manager, and the Manager accepts no liability whatsoever for the actions of third parties in this respect. This Document is provided for informational purposes only and is not to be construed as a solicitation or an offer or recommendation to buy or sell any securities. Any opinions expressed in this Document may be subject to change. The Manager is not obliged to update the information in this Document. The information in this Document must not be used by recipients as a substitute for the exercise of their own judgment and investigation. None of EQT, the Manager, Realm nor any Covered Personnel accepts any liability for any loss or damage arising out of the use of all or part of, or any omission, inadequacy or inaccuracy in, this Document. Neither the Manager nor EQT nor Realm guarantees the performance of the Units or the repayment of any investor's capital. To the extent permitted by law, neither the Manager nor EQT nor Realm nor any of their Covered Personnel, is liable for any loss or damage arising as a result of reliance placed on the contents of this Document.

The Manager, Realm and their Covered Personnel from time to time hold interests in securities of corporations or investment vehicles referred to in materials provided to clients. All information contained herein is confidential and proprietary to the Manager and Realm and, accordingly, this material is not to be reproduced in whole or in part or used for any purpose except as authorised by the Manager and Realm. It is to be treated as strictly confidential and not disclosed directly or indirectly to any other person, firm or entity.

This Document is not, and is not intended to be, an offer or invitation for subscription or sale, or a recommendation, with respect to any securities, nor is it to form the basis of any contract or commitment. This Document does not purport to identify the nature of the specific market or other risks associated with these products. Before entering into any transaction in relation to the Units, the investor should ensure that it fully understands the terms of the Units and the transaction, relevant risk factors, the nature and extent of the investor's risk of loss and the nature of the contractual relationship into which the investor is entering. Prior to investing in the Units, an investor should determine, based on its own independent review and such professional advice as it deems appropriate, the economic risks and merits, the legal, tax accounting characteristics and risk, and the consequences of an investment in them. This Document does not contain substantive commentary or analysis by the Manager and has not been prepared as a research product or comments by a research analyst.

**Past performance is not indicative of future performance.** All future rates and performance indicators are targets or estimates only and there is a risk that these are not achieved. Information in this Document is current as at the 31<sup>st</sup> March 2026.

**General Advice Warning:** Any advice given by the Manager is general advice, as the information or advice given does not take into account your particular objectives, financial situation or needs. Therefore, at all times you should consider the appropriateness of the advice before you act further.