

### Fund Strategy

The Realm Capital Series 2018-1 (Fund) will invest in balance sheet funding and syndicated bank warehousing facilities. Realm Investment House (RIH) will partner with the major banks and best of breed non-bank corporate lenders to acquire exposures in these newly capitalised facilities. RIH's assessment of the opportunities will generate good risk adjusted income returns, particularly when compared to the 'public term out market' for the same level of risk. Diversification within the Fund will be achieved by diversity of banking partners, facility sponsors and the number of individual facilities. RIH's risk management and assessment overlay are used in assessing eligible exposures. RIH will actively manage & monitor the risk of each funding facility exposure during the term of the fund.

### Fund Objective

The strategy targets a return of 4.75% p.a. over the RBA cash rate over the life of the strategy. The Fund may suit investors seeking a high yield return with a moderate to high risk tolerance.

### Fund Feature

While the termination and return of investor funds is available on the 5<sup>th</sup> anniversary (22.6.23) the manager will help facilitate off market transfers (Application Liquidity) on a case by case basis.

### Net Performance

Period	2018-1 Units	RBA Cash Rate Return
1 Month	0.66%	0.06%
3 Month	1.72%	0.23%
6 Month	3.47%	0.55%
12 Month	7.65%	1.29%
Since Inception*	8.04%	1.35%

### Fund details

**Distribution Frequency:** Quarterly  
**Applications:** Closed  
**Transfers:** Units can be transferred to an existing/new investor upon the completion of required documentation as per the PDS (Section 4.5)  
**Pricing & Reporting Frequency:** Quarterly  
**Minimum Investment Timeframe:** 5 years (22.6.23)  
**Inception Date:** 22.6.2018  
**Fund size:** AUD \$30 million  
**Benchmark:** RBA Cash Rate  
**Buy/Sell:** Nil  
**APIR Codes:** OMF8680AU  
**Management Fees:** 1.25% plus GST  
**Responsible Entity:** One Managed Investment Funds Ltd  
**Custodian:** Mainstream Funds Services Pty Ltd  
**Unit Pricing and Unit Price History:**  
[www.realminvestments.com.au/media/4](http://www.realminvestments.com.au/media/4)

### Fund Statistics

Running Yield	8.17%
Targeted Running Yield	5.50%
Credit Duration	1.89
Average Credit Rating	BB+
Number of positions	20

## Gross Running Yield\* 8.17%

\*Past performance is not indicative of future performance. The Gross Running Yield is the pre-fee income attributable to the portfolio, total return will be a function of this yield minus the fee. Please note the unit price can also experience modest variance as pay out of distributions sit at 95%. All outstanding amounts will be paid at the 30<sup>th</sup> of June.

### Credit Fundamentals explained

The Fund invests in syndicated bank warehouse facilities (Facilities). These Facilities are lines of credit which major banks provide senior funding to and the Fund invests alongside or in a junior position to the bank as the senior funder. In all cases these Facilities also have equity capital that is funded by the Originator or Sponsor, "skin in the game". These Facilities have an number of term features which help mitigate risk that can exist when investing in warehouse syndication. These terms can vary from deal to deal and can include:-

- underlying assets (the mortgages) are security against the drawdown of the facility
- increased level of equity enhancement when compared to securities that trade in the over the counter market
- favourable intercreditor rights
- short credit terms
- additional covenants
- in many instances originator balance sheet cover to make good losses and Non-Performing Loans (NPL)
- higher financing rate of return due to the structure, and the inability of the Facility to be traded quickly

Furthermore, where the total number of Non-Performing Loans (NPLs) breach arrears covenant limit, the originator is required to add additional capital to offset the breach. If there is a default and a loss on any loan, this is charged off against the excess income or capital of the originator in the facility. The originator must make this loss good and maintain a minimum capital balance NPL's can be removed from the facility, back onto the originators balance sheet in some instances.

## Fund Update

The portfolio is invested across a range of syndicated mortgage and asset backed warehouses, as well as public residential mortgage backed securities (RMBS) transactions. At month end approximately 82% of the capital series is invested within syndicated warehouse and structured RMBS notes, with approximately 13% of the fund held in public RMBS securities. The weighted average credit rating of the portfolio sits at BB+, with a short weighted credit duration of 1.89 years and a pre fee running yield to maturity of 8.17%.

## Domestic Economic Performance & System Risk

**Realm System Risk Monitor:** Our system risk has stabilised near -0.14%. Strength in collateral prices and increasing leverage across a range of product classes is speaking to the fact that the market is recovering. Our monitor is now back to late 2018 levels. We would characterise the measure as now indicating that the market is back to being balanced, after a period where performance of our measure spoke to moderate distress.

**Realm Australian Eco Monitor:** Our domestic economic monitor is tracking below trend. On balance the data is stable if uninspiring. Our base case remains that we expect the Aussie Eco measure to recover as property stabilises and interest rate cuts drive a recovery in consumption and an improvement in investment.

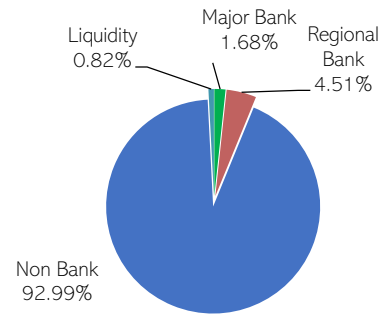
## Housing arrears & portfolio performance

Portfolio arrears performed well over the month, falling 2bps to 1.17%. This is due to the substitution of higher risk pools out of the portfolio. Arrears continue to be managed at a pool level to meet our internal risk/return criteria.

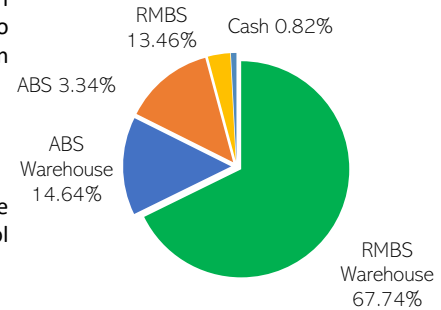
The S&P arrears index (SPIN) showed prime arrears for the month of August improving to 1.00% from 1.07%. Non-conforming arrears also improved, decreasing to 3.47% from 3.64%. Major bank arrears improved to 1.20% from 1.23%, while regional banks improved 30bps to 1.57%. Prime non-bank financials improved 16bps to 0.39% and prime non-bank originators remained steady at 0.68%.

Geographically, all states saw improvements in arrear performance except the ACT, remaining steady at 1.03%. NSW improved 5bps to 1.24% and VIC improved 8bps to 1.28%. WA arrears improved materially falling a further 16bps to 2.75%, while the NT continued to improve, falling 12bps to 2.72%. Both QLD and SA improvements were also significant, falling 11bps and 13bps to 1.79% and 1.41% respectively.

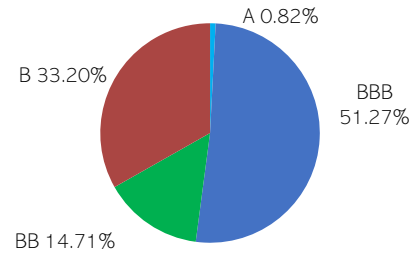
## Portfolio Composition



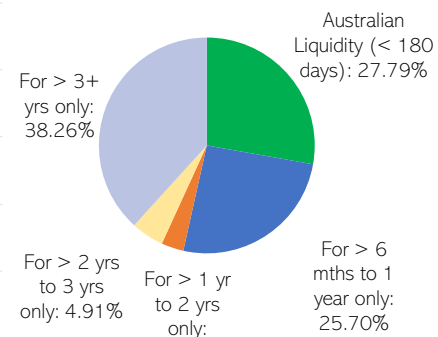
## Asset Type



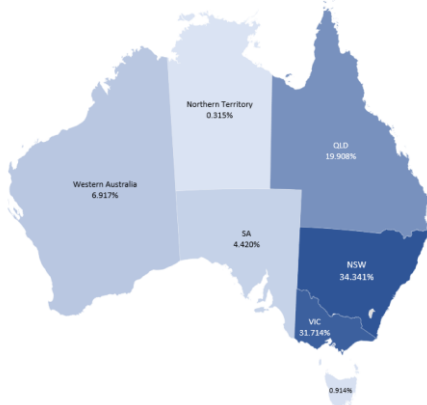
## Credit Quality



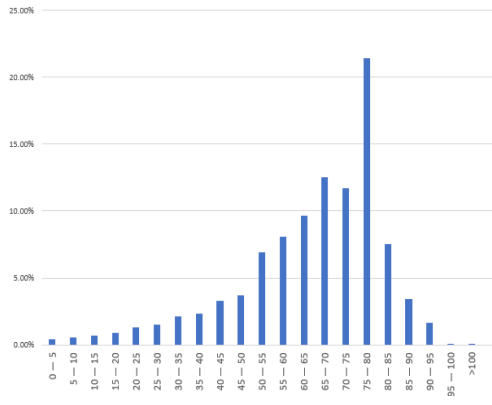
## Maturity Profile



Weighted Average Geographic Exposure



Weighted Average Portfolio LVR



Realm Investment House  
ABN 34 155 984 955  
AFSL 421 336

Level 17  
500 Collins St  
Melbourne VIC 3000

Email: [clientservices@realminvestments.com.au](mailto:clientservices@realminvestments.com.au)  
Website: [www.realminvestments.com.au](http://www.realminvestments.com.au)  
Tel: 03 8560 7297

## DISCLAIMER

Realm Investment Management Pty Ltd ACN 158 876 807, is a corporate authorised representative (number 424705) of Realm Pty Ltd ACN 155 984 955 (AFSL 421336) (Realm) is the investment manager of the Realm Capital Series Fund (ARSN 624 861 589) (Fund), One Managed Investment Funds Limited (ABN 47 117 400 987) (AFSL 297042) (OMIFL) is the responsibility entity of the Fund. The information contained in this document was not prepared by OMIFL but was prepared by other parties. While OMIFL has no reason to believe that the information is inaccurate, the truth or accuracy of the information contained therein cannot be warranted or guaranteed. Anyone reading this report must obtain and rely upon their own independent advice and inquiries. Investors should consider the product disclosure statement (PDS) issued by OMIFL before making any decision regarding the Fund. The PDS contains important information about your investment in the Fund and it is important investors obtain and read a copy of the PDS before making a decision about whether to continue to hold or dispose of units in the Fund. You should also consult a licensed financial adviser before making an investment decision in relation to the Fund. A copy of the Realm Capital Series 2018-1 Units PDS dated 4 April 2018 can be obtained by contacting OMIFL on 02 8277 0000 or the investment manager on 03 9008 7290 and continuous disclosure notices may be obtained on OMIFL's website <https://www.oneinvestment.com.au/realm-capital-series/> or the investment manager's website <http://www.realminvestments.com.au/>. Realm believes that the information contained in this document is accurate when issued. Realm does not warrant that such information or advice is accurate, reliable, complete or up-to-date, and to the fullest extent permitted by law, disclaims all liability of Realm and its associates. This document should be regarded as general information only rather than advice. In preparing this document, Realm did not take into account the investment objectives, financial situation and particular needs of any individual person. The information contained in this document must not be copied or disclosed in whole or in part without the prior written consent of Realm, and Realm accepts no liability whatsoever for the actions of third parties in this respect. It is presented for informational purposes only and is not to be construed as a solicitation or an offer or recommendation to buy or sell any securities. Any opinions expressed in this document may be subject to change. Realm is not obliged to update the information. The information must not be used by recipients as a substitute for the exercise of their own judgment and investigation. Neither Realm nor any of their directors, employees or agents accept any liability for any loss or damage arising out of the use of all or part of, or any omission, inadequacy or inaccuracy in, this document. OMIFL and Realm do not guarantee the performance of the Fund or the repayment of any investor's capital. To the extent permitted by law, neither OMIFL nor Realm, including their directors, senior executives, employees, consultants, advisers, officers or authorised representatives, are liable for any loss or damage arising as a result of reliance placed on the contents of this document. Realm only provides services to wholesale clients, as defined in section 761G of the Corporations Act. Past performance is not indicative of future performance. Information in this document is current as at 31 October 2019.